



Understanding How Local Institutions Affect Global Projects in Developing Countries

Cheryl Chi
Stanford University



An Expatriate's Story



“A tunnel, bridge, or earthwork is the same whether it is in the U.S or Taiwan or China.”

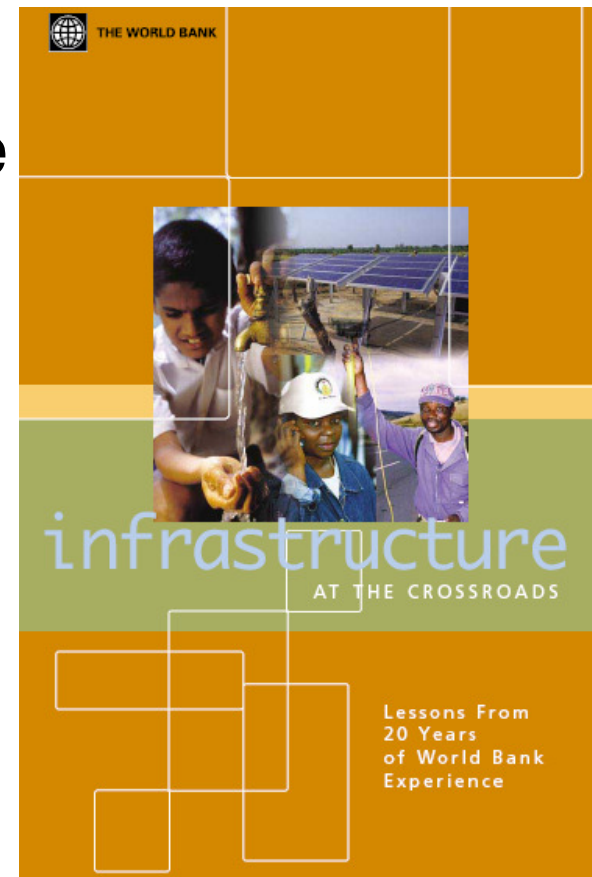
CRGP Executive Committee Meeting – September 26th, 2008

An Expatriate's Story



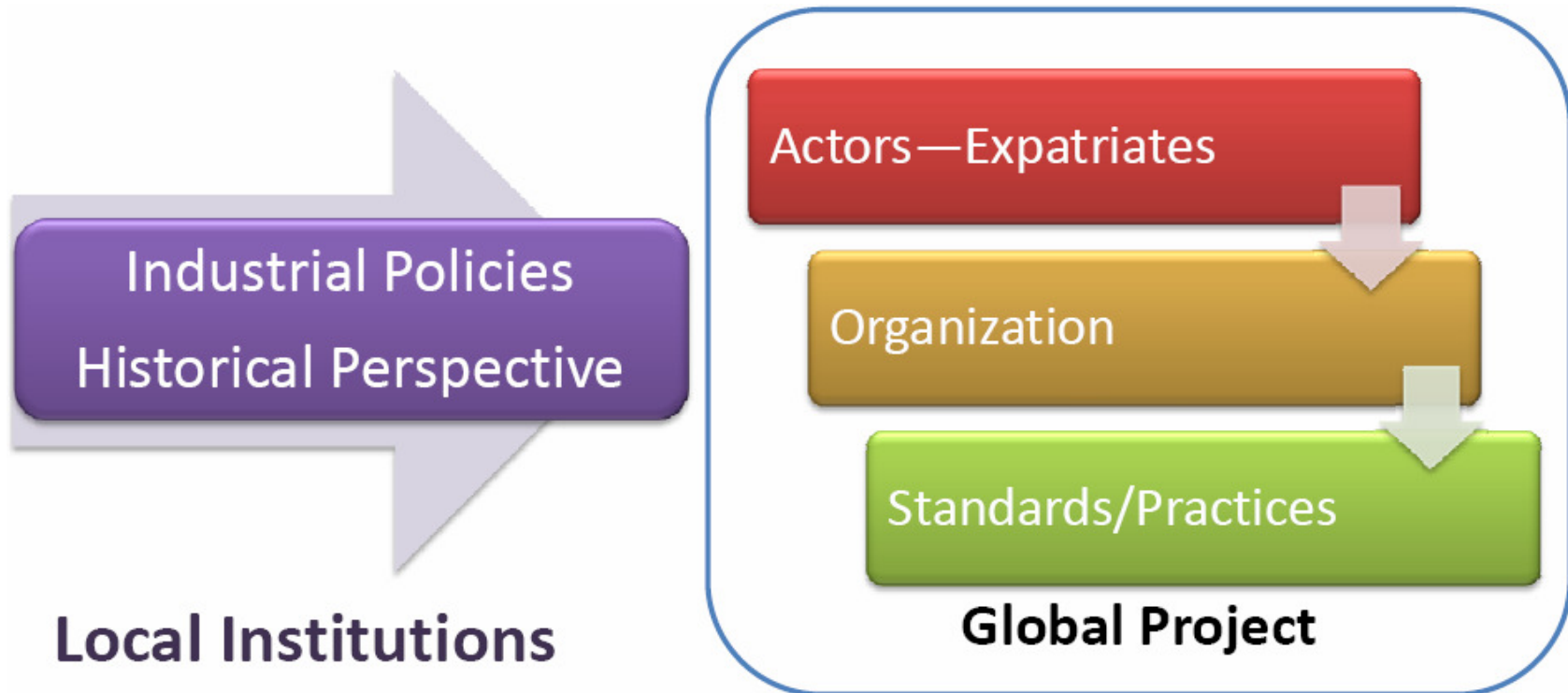
Observed Problem

- “The Bank learned the importance of tailoring design to local circumstances.”
- “Standardized approaches have proven to be inadequate in the design of both projects and reforms.”



Research Framework

- How Local Institutions Affect Global Projects in Developing Countries?



Central China vs. Taiwan

Central China



- Historical cultural center—capital cities
- Railway Industry:
 - Military Organization
 - Socialism Society: central planning



Taiwan



- Historical trading center—colony
- Railway Industry



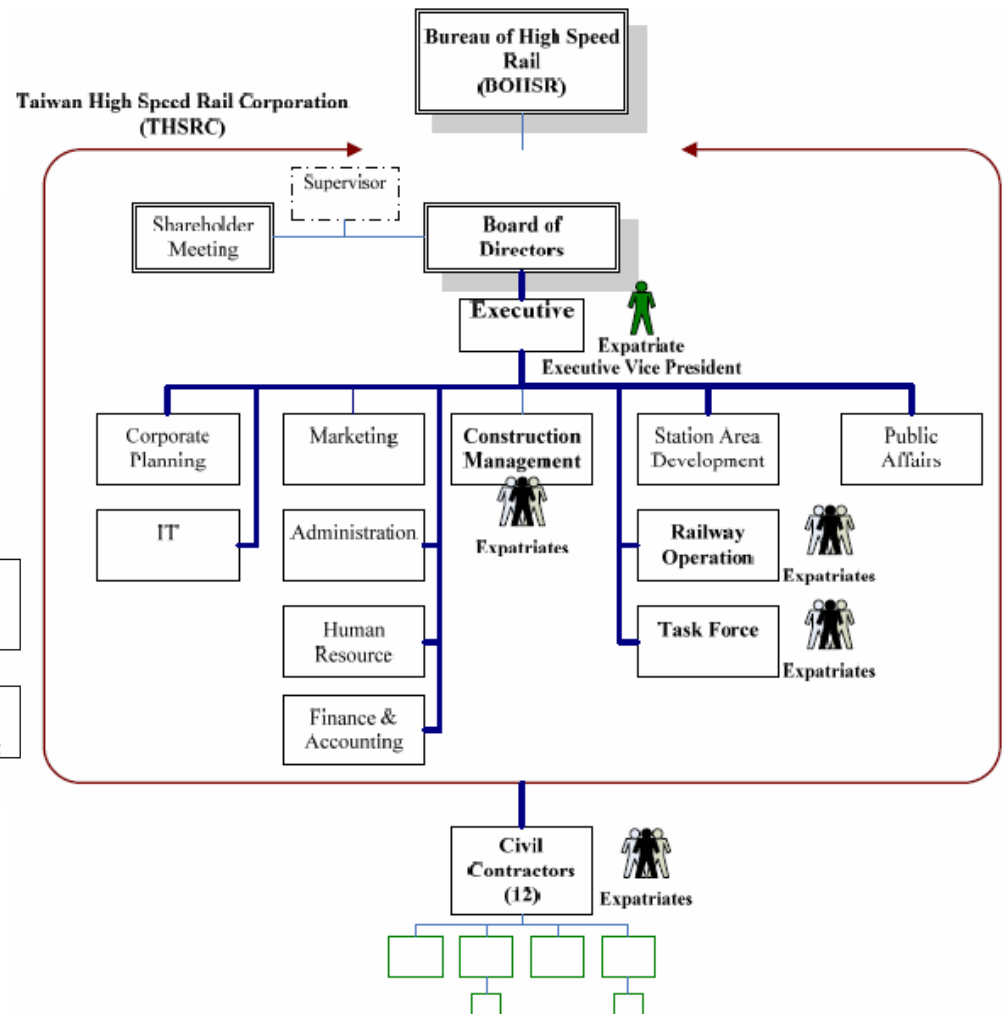
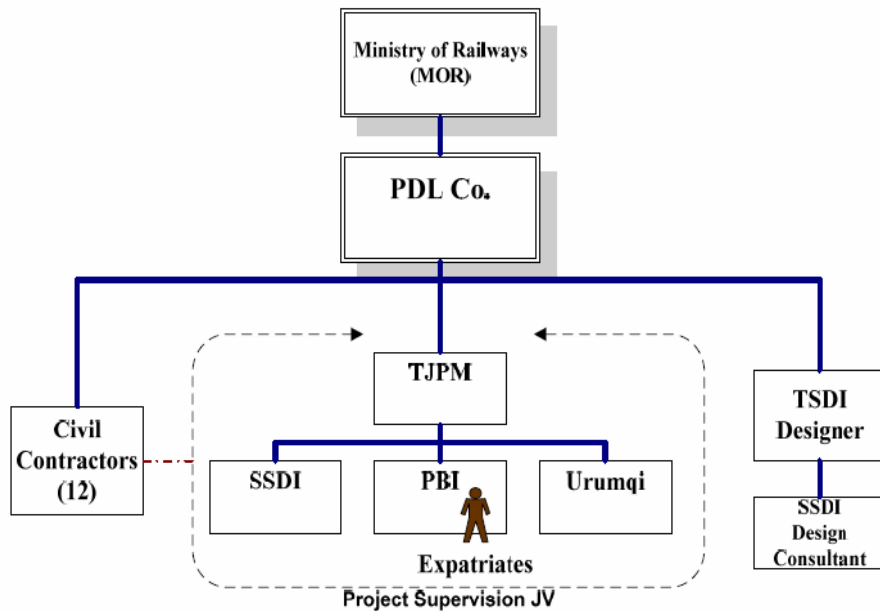
Committee Meeting –

Organization

No. of Expatriates:
Case 1: 3 (118 miles)
Case 2: 10 (285 miles)

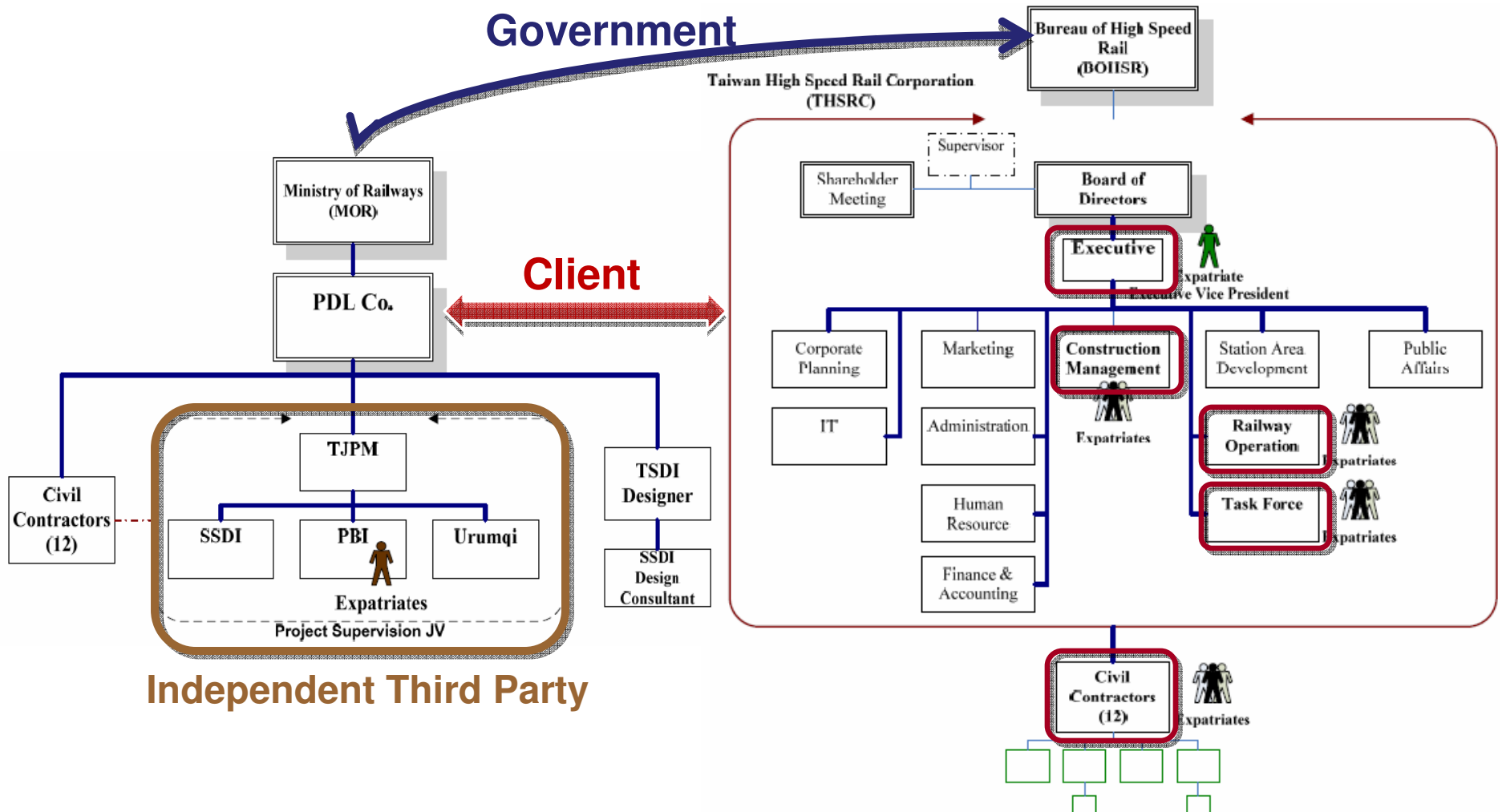


No. of Expatriates: 484
(214 miles, at peak in 2003)

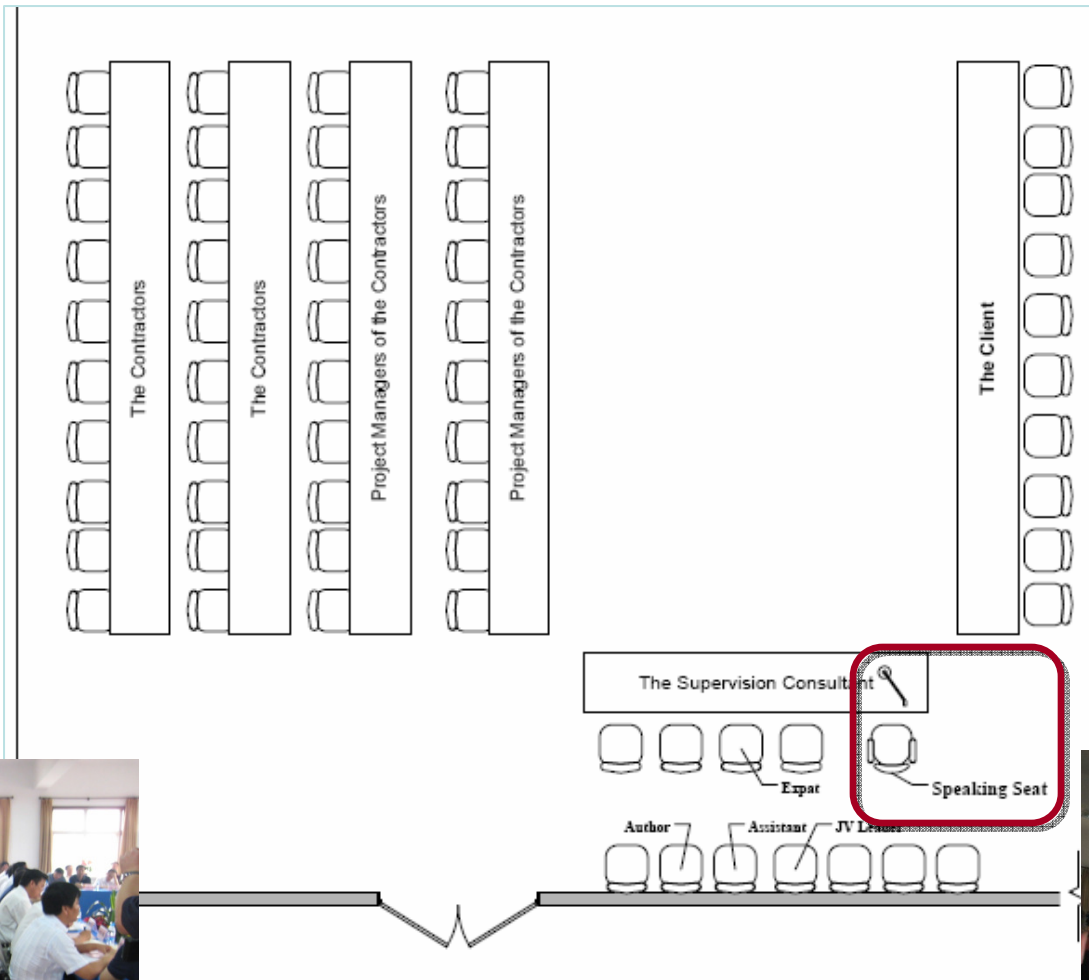


Note: Civil work only

Organization



Standard/Practice



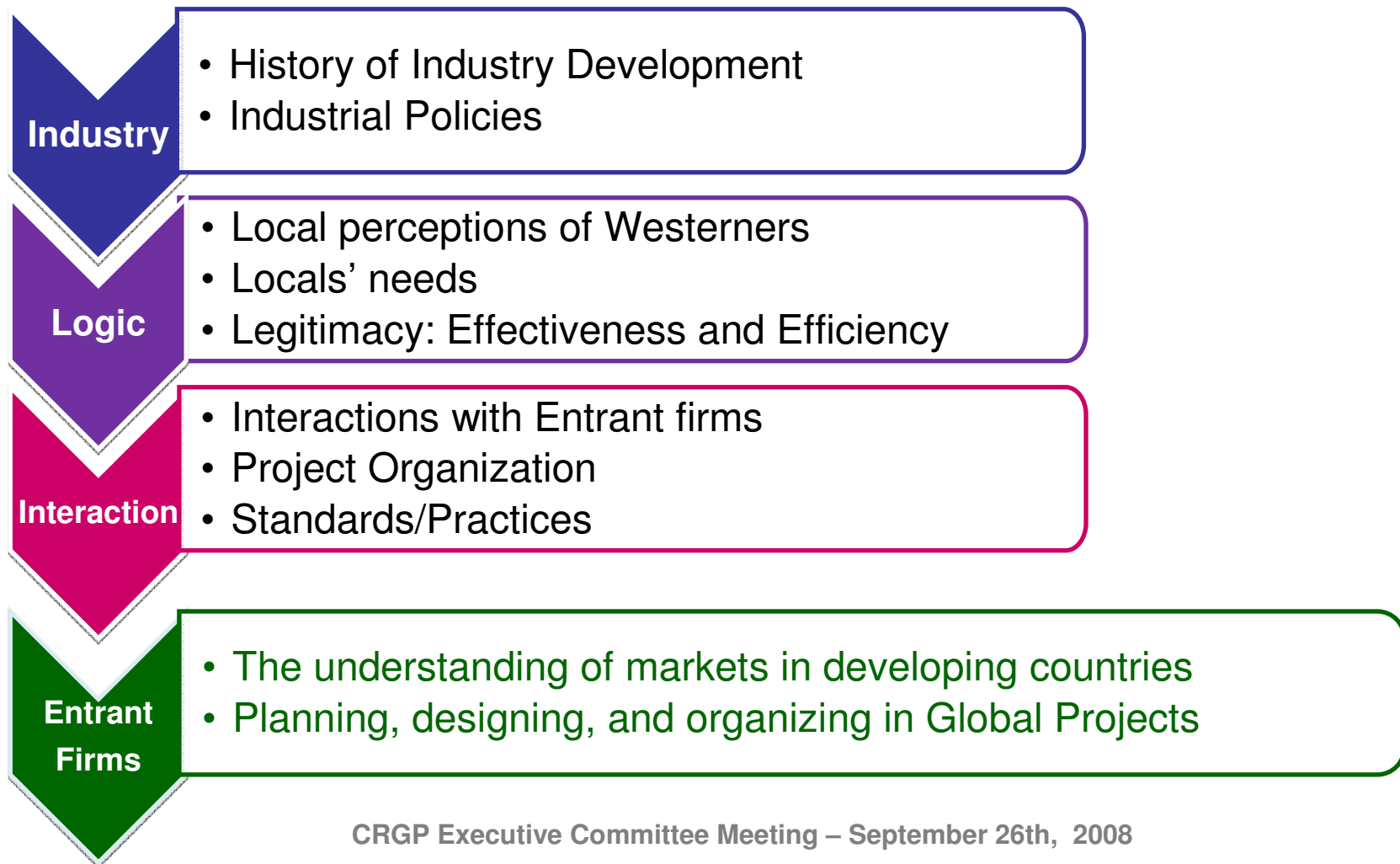
Partial settings of the official meeting in PDL B



CRGP Executive Committee Meeting – September 26th, 2008

Research Framework

How Local Institutions Affect Global Projects in Developing Countries?





Questions

CHERYL CHI

